

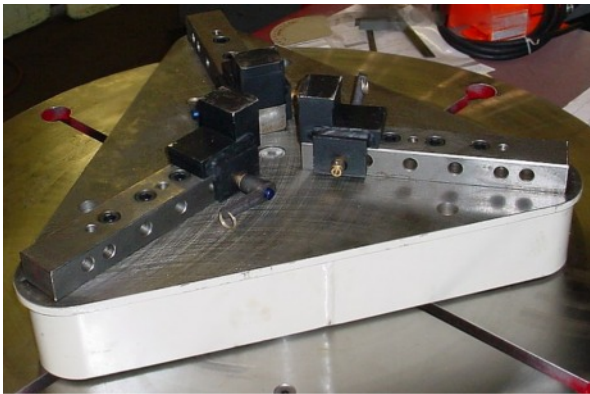
OPTIONS

3 JAW SELF CENTERING SCROLL CHUCKS



High quality cast iron body with precision machined guideways and bearing surfaces, drop forged case hardened scroll plate and hardened and ground pinions. 1 set of hardened reversible two piece jaws, 1 self ejecting wrench, 1 set of mounting screws, 2 allen keys and mounting plate provided.

3 JAW SELF CENTERING GRIPPER CHUCKS



The Gripper is a cam operated assembly designed specifically for the welding industry. The gripper incorporates many features that make it especially suitable for the welding environment. These features include single point cam operation of the jaws and adjustable quick-change reversible jaws that can be positioned for small and large diameter work pieces. Heavy-duty construction and a completely enclosed faceplate prevents flux and weld splatter from impairing the operation of the gripper.

Features

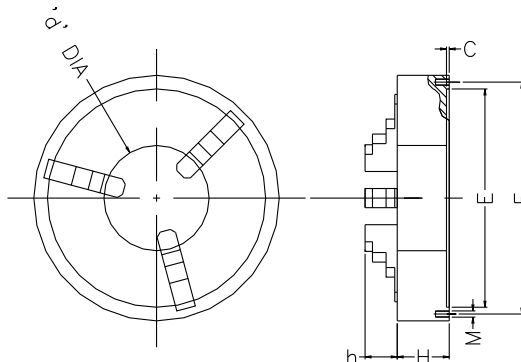
- Self Centering
- Heavy duty 3-Jaw Construction
- Single handed operation
- Removable and reversible jaws
- Low maintenance
- Long jaw bites for stability and safety
- Serrated jaws available



KOIKE ARONSON, INC. / RANSOME

OPTIONS

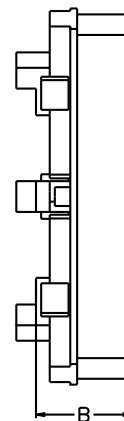
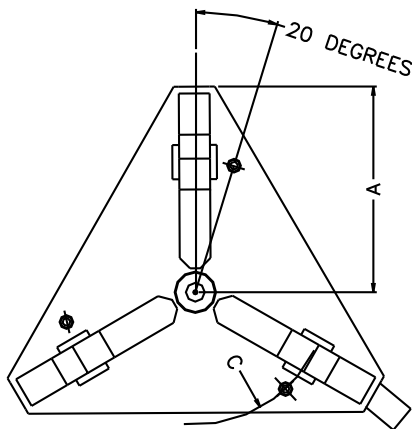
SCROLL TYPE



Size	Inside Clamp Range	Outside Clamp Range	D	F	E	d	C	H	h	Thread M	Weight Lbs.	Mount Plate/Lbs
3JC6	1.65-5.75	.12-6.30	6-1/4"	5.511"	4.921"	1.653"	.1575"	2.539"	1.693"	M10 (3)	22	.75x8 Dia 11 Lbs.
3JC12	2.56-10.43	.39-12.40	12-1/2"	11.26"	10.24"	4.055"	.1969"	3.701"	2.244"	M16 (6)	121	1"X14.38 Dia / 28 Lbs.
3JC25	5.51-23.23	1.18-24.80	25"	13.00"	16.03"	9.92"	1.18"	5.905"	3.42"	3/4-10 (6)	630	1"X28 Dia / 175 Lbs.

***All dimensions are for reference only and subject to change without notice.

GRIPPER TYPE



Model	Clamp Range inches	Inside Clamp Range inches	Outside Clamp Range inches	Load Capacity Lbs.	Weight Lbs.	Dimensions		
						A	B	C
33	1.75" - 31.25"	5.25" - 31.25"	1.75" - 27.75"	3000	228	18"	7"	19-5/16"
44	1.75" - 44"	5.25" - 44"	1.75" - 40.5"	3000	305	23-1/2"	7"	19-5/16"
63	3.5" - 62.5"	7" - 62.5"	3.5" - 59"	7500	722	34-13/16"	8-1/8"	26-3/4"

***All dimensions are for reference only and subject to change without notice.

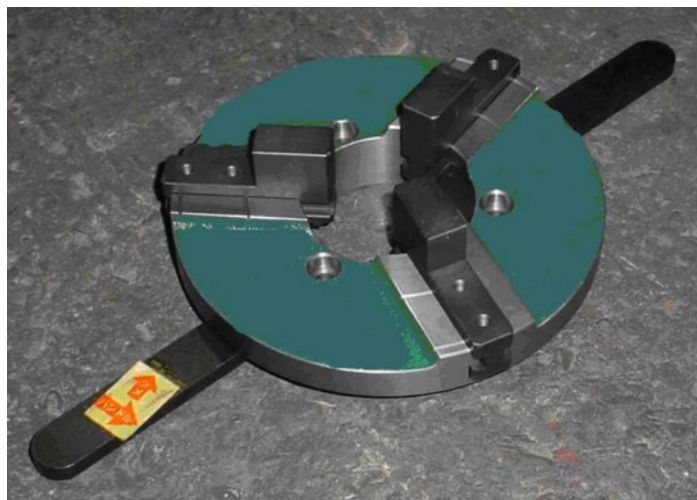


Koike Aronson Inc.

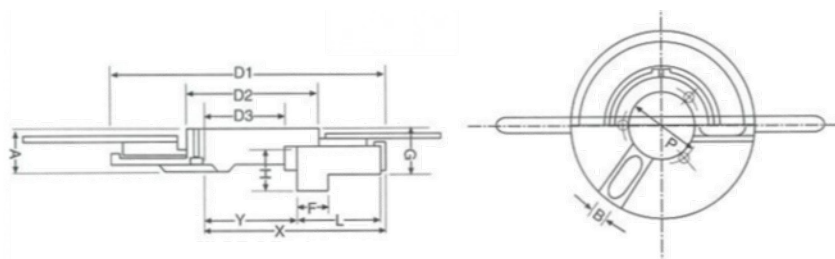
P.O. Box 307, Arcade, New York 14009
Phone (585) 492-2400 Fax (585) 457-3517
www.koike.com

OPTIONS

WP-3 JAW SELF CENTERING CHUCKS



Open center 3 Jaw self centering chuck, allows fast set-up of cylindrical shapes. Heavy-duty construction and a completely enclosed faceplate prevents flux and weld splatter from impairing operation.



Model	WP-200	WP-300	WP-400
Inside Clamp Range	3.1—8.7"	4.7"- 11.8"	6.5" - 15"
Outside Clamp Range	.8—5.1"	2"-7.9"	3.5" - 12.2"
D1	7.8"	11.8"	15.7"
D2	4.7"	5.9"	9.8"
D3	3.1"	3.9"	6.7"
A	1.5"	1.5"	1.8"
B	3/4"	3/4"	.98"
G	2.7"	2.7"	3.8"
L	3.0"	3.1"	3.9"
H	1.8"	1.8"	2.6"
F	1.3"	1.4"	1.4"
P	3.9"	4.7"	8.7"
Weight (Lbs.)	13	26	48

***All dimensions are for reference only and subject to change without notice.

Features

- Self Centering
- Heavy duty 3-Jaw Construction
- Quick lock handles
- Low maintenance
- Light weight for small capacity Positioners



KOIKE ARONSON, INC. / RANSOME

V1-2602